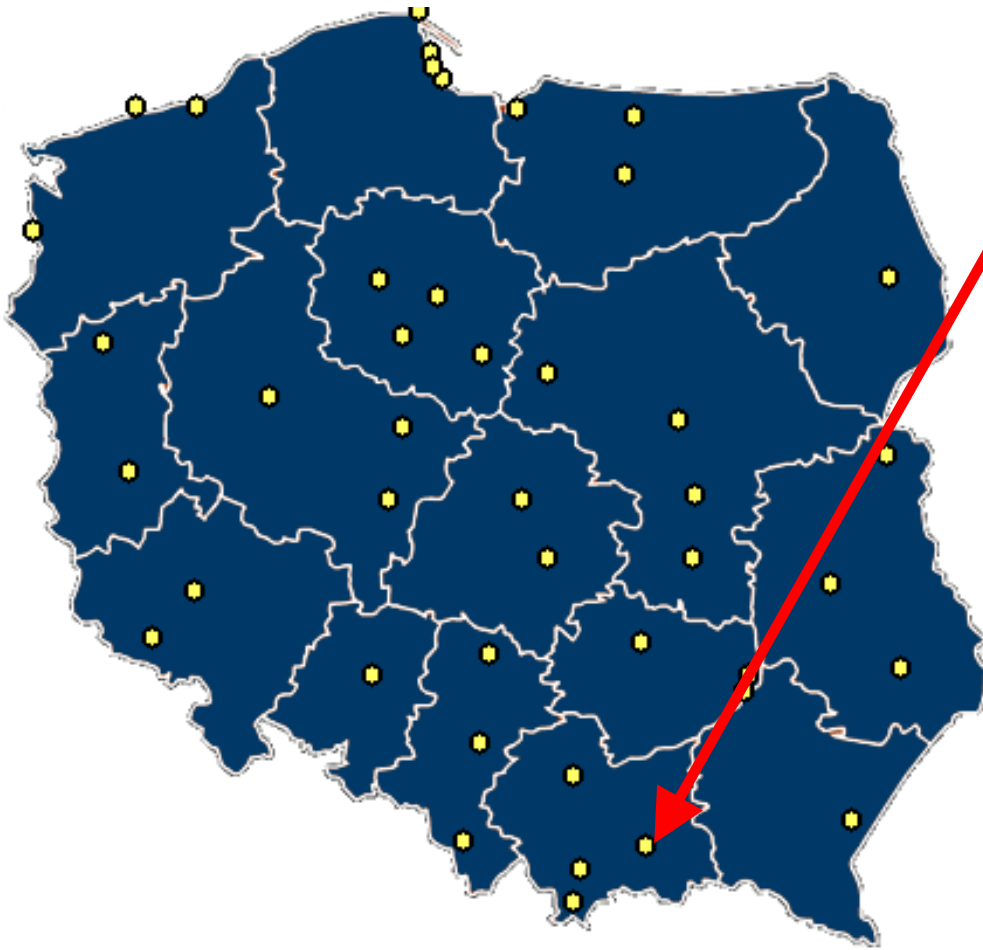


# *State University of Applied Sciences in Nowy Sącz POLAND*



PAŃSTWOWA WYŻSZA SZKOŁA ZAWODOWA W NOWYM SĄCZU

# Location of Nowy Sącz



Nowy Sącz is a charming polish town situated in the Sadecka Valley (Kotlina Sadecka) in the mountain range of Beskid Sadecki (the main range of the Carpathian Mountains) at the confluence of the Kamienica river into the Dunajec. The town occupies an area of approximately 60 square kilometers and has a population of 85000 people.



# *Postcard from Nowy Sącz*

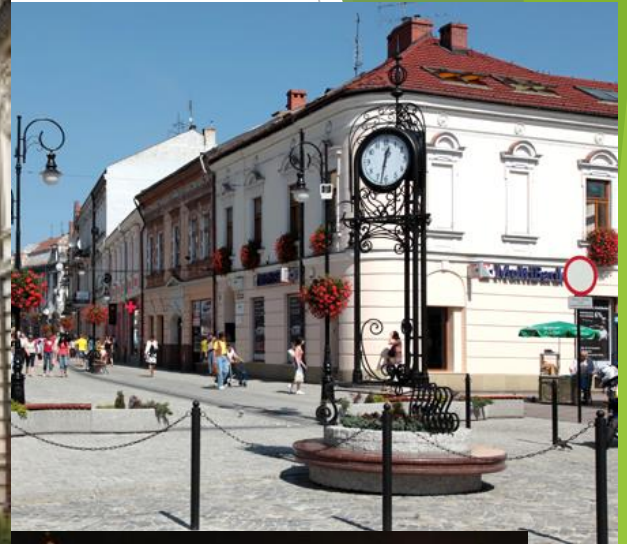




# *Town Hall in Nowy Sącz*



# Center of Nowy Sącz





# *The Ethnographic Park*



<https://www.youtube.com/watch?v=aERrMwclN5M>

# *The Galician Town*





# *Tradition*

State University of Applied Sciences in Nowy Sącz is a state and public school, established by Polish Government order on 16 June 1998 as one of the first schools of this type in Poland.





# *Authorities*



**doc. dr Marek Reichel**  
Vice Rector for Science  
and Development



**dr Halina Potok**  
Vice Rector for Students Affairs



**Rector**  
**dr hab. inż Mariusz Cygnar, prof. nadzw.**

# *Studies*

Full-time studies on 1st level are free and last 3 years (bachelor) or 3,5 years (engineer).

Full-time studies on 2nd level are also free and last 1,5 - 2 year depending on chosen specialization.

Full-time master's studies usually last five years and are tantamount to obtaining a master's degree.

University also offers part-time studies in the external system, as well as post-diploma studies and vocational courses.





# *Studies*

Graduates on 1st level are awarded the licentiate (BA) or engineer diploma (BSc Eng.), which is the first stage in the two-stage model of higher education. The acquired qualifications and the diploma enable the graduates to work in their profession and continue higher education.

Graduates on 2nd level are awarded the master diploma (MA).



# ***Structure***



## **Rector`s office**





# Location



**Rector`s  
office**



**Institute of  
Foreign  
Languages**



**Institute of  
Pedagogy**



**Institute of  
Physical  
Education**



**Institute of  
Engineering**



**Institute of  
Economics**



**Institute  
of  
Health**



**Library**



**Dormitory**

# *Institute of Economics*

## **Field of study: Economy (BA)**

### **Modules:**

- **Economy and finances of the public sector**
- **Corporate finance and accounting**
- **Field of study: e-Administration (BA)**

### **Modules:**

- **Public administration and real estate management**
- **Administration in the information society**

## **Field of study: Management (BA)**





# *Institute of Economics*

**Field of study: Economics and  
business organization (MA)**



wizualizacja: Dresler Studio



# *Institute of Foreign Languages*

**Field of study: Filology (BA)**

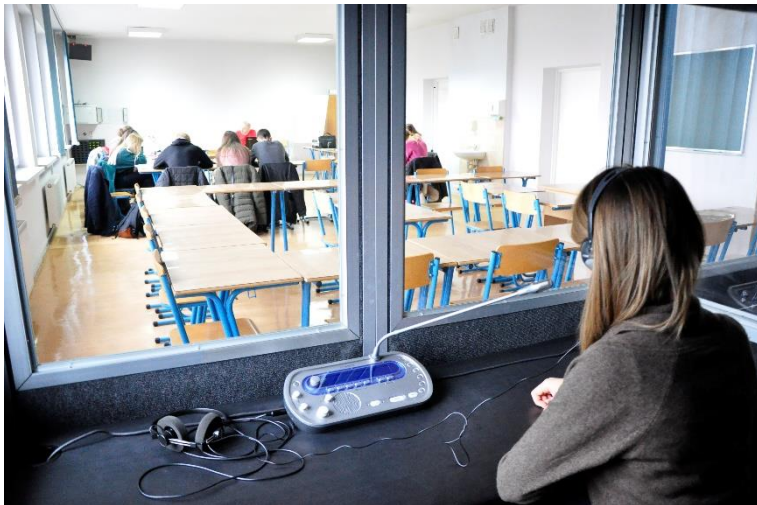
- **English translation**
- **German translation**
- **Russian translation**







***Simultaneous interpreting booths***



# Field of study: Linguistic for business (BA)



[https://www.youtube.com/watch?v=SPBq\\_aHAM0U](https://www.youtube.com/watch?v=SPBq_aHAM0U)



# *Institute of Health*

## **Fields of study:**

- **Nursing (BA)**
- **Nursing (MA)**
- **Medical rescue (BA)**
- **Diethetics (BA)**



## *Dietetics Workshop*





# *Monoprofile Medical Simulation Center*

On October 4, 2019, the Monoprofile Medical Simulation Center was opened.

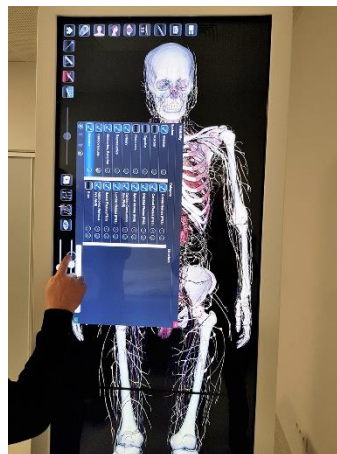
The center was established as part of the project "Improving the quality of education in the fields of nursing and obstetrics". Thanks to the subsidy obtained in the amount of PLN 2,575,000 and own funds invested in the amount of PLN 4,000,000 - a facility with a usable area exceeding 820 m<sup>2</sup> was created.

The Medical Simulation Center houses:

- 1) a medical emergency room with a simulator of a well-equipped ambulance and a SOR room, which will be used by students of the Medical Emergency Department
- 2) Monoprofile Medical Simulation Center for students of Nursing.

The Medical Simulation Center will allow to recreate clinical situations in teaching laboratories, serving to improve the quality of education, primarily in the field of nursing.

<https://www.youtube.com/watch?v=-ObWoNFVGS8>



**Simulator (phantom) - "SimMan ALS" advanced simulator** - an adult patient's phantom for learning and training procedures performed by paramedics in pre-hospital and hospital conditions.

[https://www.youtube.com/watch?v=psZpQ\\_3Bn4I](https://www.youtube.com/watch?v=psZpQ_3Bn4I)



### **Virtual anatomical table**

<https://www.youtube.com/watch?v=hs6arEdnlk0>





# *Institute of Physical Education*

**Field of study: Physical education (BA)**

**Modules:**

- **Corrective exercises and biological recuperation**
- **Instructor specialization and biological recuperation**
- **Physical education for uniformed services**
- **Fitness instructor**

Instructor specializations are: skiing, gymnastics, athletics, swimming, basketball, handball, volleyball, football.

<https://www.youtube.com/watch?v=dlnBEruCvBk>



## Field of study: Physiotherapy (Full-time master's studies )



## Field of study: Internal security (BA)





## *Laboratory of cryotherapy and hypoxia*



*Football team players during a visit to the cryogenic chamber*



# ***Institute of Pedagogy***



**Field of study: Pedagogy (MA) Full-time master's studies**

• **Field of study: Art Education (BA)**

**Modules:**

• **Visual arts with digital image creation and photography**

• **Field of study: Public relations and advertisement (BA)**



<https://www.youtube.com/watch?v=TAOv4SLpIVc>





# ***Institute of Engineering***

*I degree*

**Field of study: Management and production engineering (BSc Eng.)**

**Modules:**

- **Mechanical engineering**
- **Food technology**
- **Ecoenergetics**

**Field of study: Mechatronics (BSc Eng.)**

**Modules:**

- **Car mechatronics**
- **Applied mechatronics**

**Field of study: Informatics (BSc Eng.)**

**Modules:**

- **Applied informatics**

**Field of study: (BSc Eng.) Transport and logistics**

**Modules:**

- **Transport engineering and shipping**
- **Logistics of production process**





# *Institute of Engineering*

## *II degree*



### **Fields of study:**

#### **Management and production engineering (MSc)**

##### **Modules:**

- **Reconstruction engineering**
- **Production technology and exploitation the technical systems**



#### **Mechatronics (MSc)**

##### **Modules:**

##### **Bionics in mechatronic systems**

- **Vehicles and machines mechatronics**
- **Mechatronics in production systems**



## *II degree*

### **Fields of study: Informatics (MSc)**

#### **Modules:**

- **Computer systems programming**



<https://www.youtube.com/watch?v=wPrhziJMQI>

# ***International cooperation***

**State University of Applied Sciences in Nowy Sącz cooperates also with foreign universities outside of Erasmus Programme; this cooperation concerns: exchange of students and academic teachers, development of joint scientific projects, participation in academic meetings and conferences, as well as joint academic publications.**





# *Erasmus+ Programme*

**State University of Applied Sciences in Nowy Sacz is cooperating with over 40 universities in European Union within students and teachers mobility and with many companies in the range of students practice placements.**







# Cooperation with local environment

- Volunteer work for many organizations and institutions
- Cooperation with local authorities
- Cooperation with polish universities
- Cooperation with primary and secondary schools
- Cooperation with local companies (industry, business, art, sport)





# Students activity

Students of State University of Applied Sciences in Nowy Sącz are very active, they work in many local organizations:

- Students Government
- Students Scientific Circles
- Students Sport Organization
- Students Art Groups  
(theater, plastic and music groups)





Thank you for your attention

